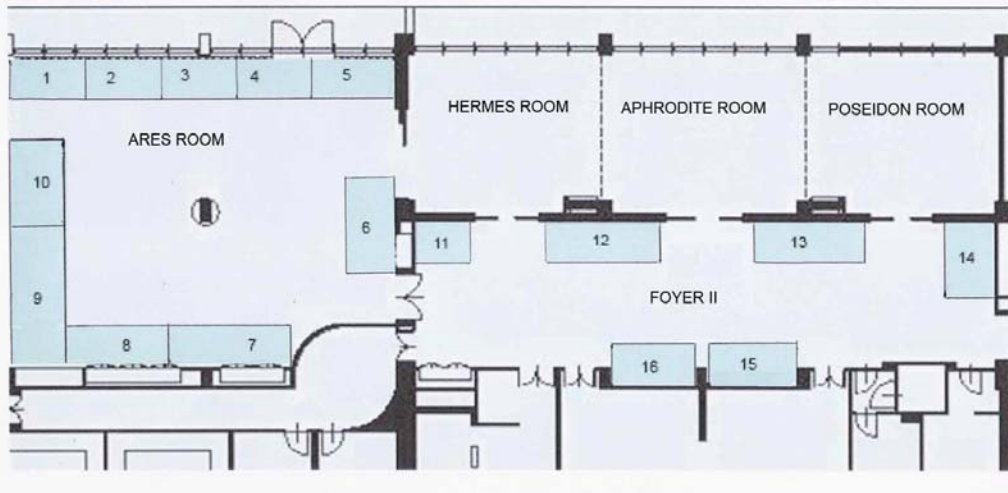
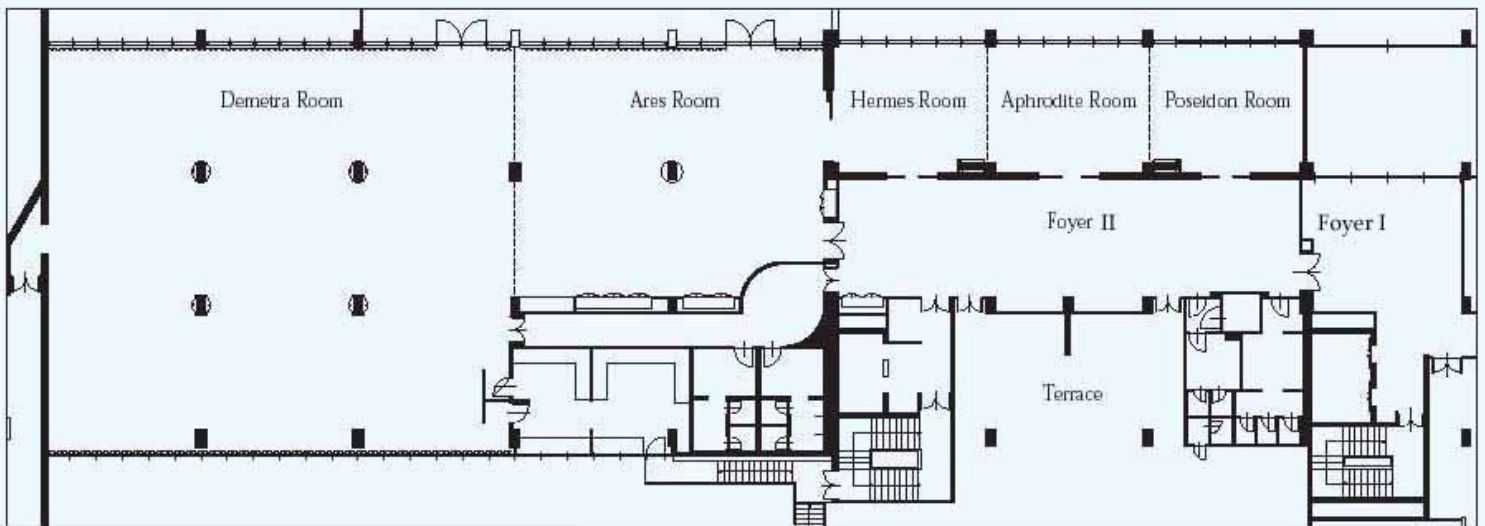


ECU 2005 Convention Exhibition Area Floor Plan



Station	Size (m ²)	Cost (CY £)
1	3 x 2,5	900
2	3 x 2,5	900
3	3 x 2,5	900
4	3 x 2,5	900
5	3 x 2,5	900
6	4,5 x 2,5	1200
7	4,5 x 2,5	1200
8	4 x 2,5	1100
9	4,5 x 2,5	1200
10	3 x 2,5	900
11	2 x 2,0	600
12	4,5 x 2,5	1200
13	4,5 x 2,5	1200
14	3 x 2,5	900
15	3 x 2,5	900
16	3 x 2,5	900

Main Conference Centre General Plan



FLOOR AREA		HEIGHT	
Demetra Room	442.0 m ²	Door Clearance	209cm
Ares Room	176.0 m ²	Average Height	250cm
Hermes Room	47.6 m ²		
Aphrodite Room	49.1 m ²		
Poseidon Room	46.8 m ²		

The main conference room will be the "Demetra Room" and the exhibition areas will be at the "Ares Room" and the "Foyer II"